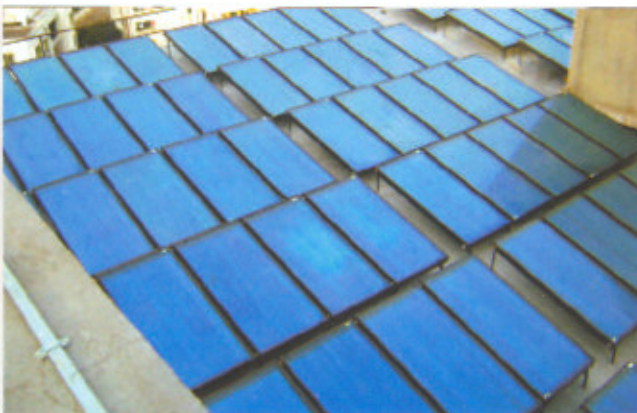
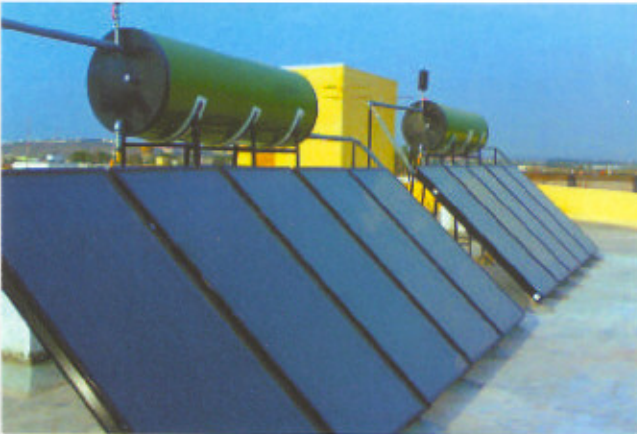


## Industrial Solar Water Heating System



### Features :

- Thermosyphon based Solar Hot Water generators
- Systems for Flat Roof / Gravity Feed Applications.
- Forced circulation systems for differential head and pressurized circulation systems.
- Fixed Temperature System for Critical Temperature Applications.
- Differential temperature Systems for large scale Systems for varied Hot water Applications.
- Hot Water available for round the clock requirements with auto circulation systems.
- Automatic Temperature Controls and precise temperature controls.
- Hybrid system with GAS or Themic fluid or Diesel or electricity based back up heating .
- Manifold option for Building Integration and Low Load Collector mounts.
- Flat Plate and Evacuated Collector Options with Manifold Designs for Varied Site conditions.
- Hydro Pneumatic Integrated systems for Hotels, High Rise Buildings, Apartments and Industrial needs.

### Application :

Hot Water for Bungalows, Hotels, Resorts & Guest Houses, Jungle Lodges & Resorts, Residential Schools, Hospitals, Community Centers, Agro Farms, Bio Farms, Cattle Farms, Biological Industries, Paint shops, Wash stations, Industries. Boiler Feed, Service stations, Leather processing Industries.

### Capacities :

500lpd, 1000lpd, 2000lpd, 3000lpd, 5000lpd, 10000lpd. and above.

Products Approved by:



## Solar Water Cooler



### Working Principle

Solar Water Cooler works on evaporative principle. By this system, in hot summer & dry climatic condition, cooling of water can be achieved upto 25 degree centigrade.

However under humid climatic condition (during monsoon season) this temperature may vary from 27 to 30 degree centigrade.

### Why Healthy

- Water is filtered with micro filter.
- Cooling and storage system are made of copper material.
- Temperature of the cool water is friendly to human body and copper material helps in achieving nearing zero 'B' water. Copperised water also helps in maintaining normal health in good condition.

### Features :

- With Solar Power.
- Copper Base cooling.
- Environment Friendly Technology cools water using evaporative principle.
- Does not require any external source of energy like traditional electricity, ice etc. for cooling the water.
- Works with negligible operational & annual maintenance cost.
- Provides filtered, hygienic, healthy & moderately cool drinking water.
- Ideally suitable for Public Places such as Parks & Gardens, Bus depots, Hospitals, Schools & Hostels, Institutions, Temples, Industries like Foundries & Rolling Mills, etc.
- Available in different models with different capacities ranging from 10 lit/hr to 50 lit/hr.

